



RWBA  
SIXTH  
FORM



# ROYAL WOOTTON BASSETT ACADEMY



Welcome to the Year 13 Parent information evening 2024



# Day to Day

Attendance & Punctuality  
Lessons

Workload and Organisation -1 hour for every  
hour spent in the classroom (minimum).

Homework on MS Teams

Catering arrangements

Dress Code

Bursary 16 - 19



# Be Ready for Yr 13 Programme

Introduced in June 2024

## Included:

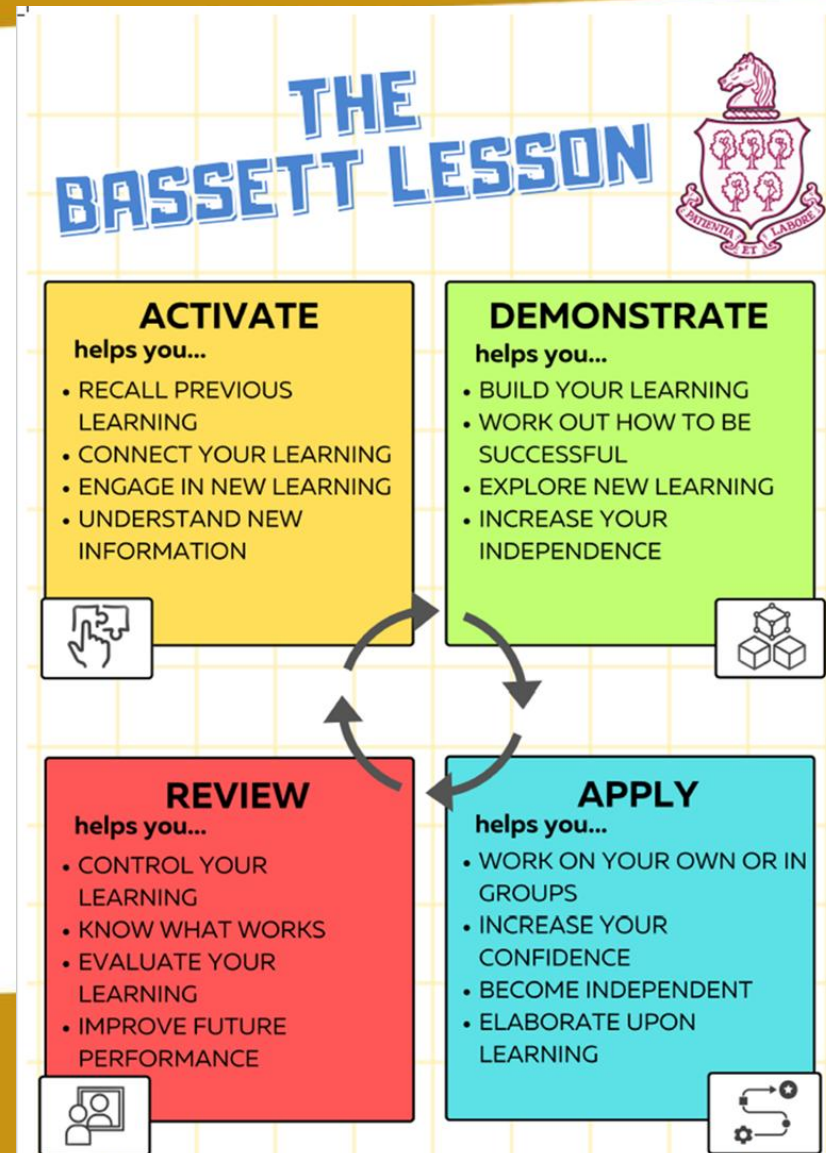
- In depth feedback on Yr 12 exam papers
- Revision strategy presentations and workshops
- Resilience workshops.
- 1:1 PDP conversations with Tutors.
- Specific department action plans
- Communication with parents at Parent evening and by email/phone
- Summer work set
- Resists planned for 3<sup>rd</sup> week of term.
- Reflection on PDP action plans
- Evaluation of student progress
- **Now final preparation for Mock Examinations.**

### The Bassett Learner

- Explorer
- Aspirational
- Risk taker
- Independent

### The Bassett Leader

- Expert
- Adaptable
- Role model
- Learner-Led



# Mock Examinations

- Free Periods – now directed study time. **Starting Monday 7<sup>th</sup> October.**
- Directed study time will be reviewed after the mock examinations.
- Students exceeding or reaching their target grades will have the privilege to come and go off site during non-timetabled lessons provided they maintain their academic targets.
  
- Write a to do list
- Plan and write your personal statement
- Consolidate learning, prepare for the next class.
- Do some Uni research, look at apprenticeship sites
- Use an effective learning strategy.
- Use the QR codes to access the department read, listen watch list.
  
- <https://www.whatuni.com/advice/blog/tips-for-using-free-periods-effectively-sixth-form/45626/>



RWBA

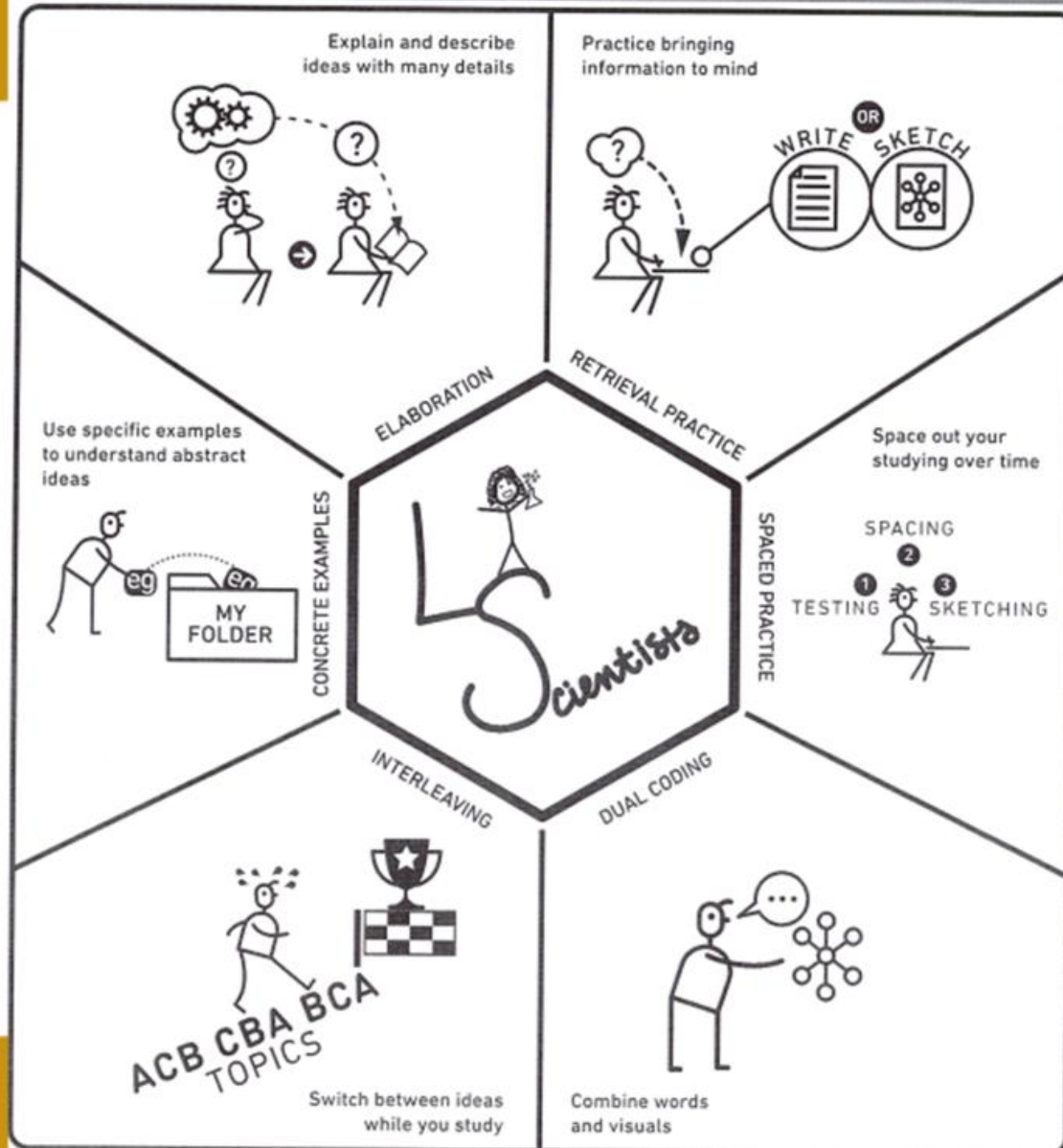
SIXTH  
FORM



# Six Strategies for Effective Learning

LEARNINGSOCIETYS.COM

All of these strategies have supporting evidence from cognitive psychology. For each strategy, we explain how to do it, some points to consider, and where to find more information.



- Dual Coding
- Spaced Practice
- Retrieval practice
- Elaboration
- Concrete examples
- Interleaving

<https://c927c895-9843-4e30-bdaa-2f10915b9992.filesusr.com/ugd/78cdf6fe474deb5f20470b88b3ebaa8642f455.pdf>





This book is a great student's guide to learning and give students examples and support in how to learn and most importantly remember the information.

Available in all good book shops. Amazon link below.

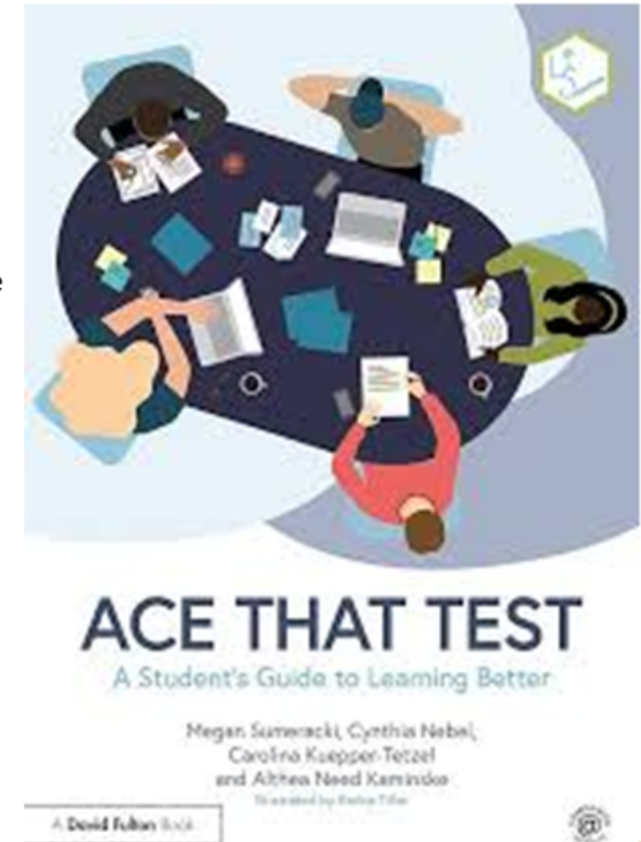
<https://www.amazon.com/Ace-That-Test-Students-Learning/dp/1032355859>

We know students have more to learn than ever before and there is a lot of pressure to perform well on tests, demonstrating superior learning. However, common study strategies such as cramming, highlighting text, and repeated reading have little impact in the longer-term. This exciting new book reveals the effective study strategies that will help you to use your time more efficiently, ace your tests, and retain information over time.

In full colour and accompanied by beautifully illustrated graphics, Ace That Test offers evidence-based learning strategies that students can use during their study sessions, including dual coding and the power of retrieving what they know. Including concrete examples of the ways students can use each strategy, illustrations to leverage dual coding principles of learning, and questions and activities for retrieval practice, the book covers:

- How to prepare your mind for learning
- Making better decisions about what you study
- Planning study sessions
- Use visuals and words to aid understanding
- Understanding concepts
- Improving learning in the long run
- Reading and note-taking strategies

With QR codes linking to answers to embedded questions and supplemental material, this is essential reading for college, university, and school students as well as educators teaching study skills or learning to learn courses.





# Effective Revision

Revision techniques include **flash cards, Cornell notes, past papers, mind maps, group work and recording yourself talking then playing it back.** Finding what works for you involves trial and error. Bear in mind that what works well for one exam might not work for another.

**Be prepared – Know the specifications and practice**

# Work Commitments

Attending RWBA Sixth Form is a full-time provision. All students are expected to attend from 8.30 daily. Attend scheduled lessons and complete work to deadlines.

When not face to face with teachers' students are now expected to attend a directed study session and can only leave the school site at breaktime or lunchtime.

'The results show that students who do well at school also tend to do well at university and that private study improves grades. Missing classes had a negative effect on grades. Paid employment did not have a large effect on grades. Our results show that some paid employment improves grades slightly, but **working more than fifteen hours per week has a negative effect.**'



# Academic Mentoring

Tutors play the role of Academic Mentors

Track progress

Monitor work ethic and completion rates

Behaviour

Signpost students for support.



# Pastoral support

Mrs Allen – Student Manager for Sixth Form

1:1

Small group work support

Workshops

Liaison with external agencies

Mental Health First aid

Emotional Support.

School counsellors



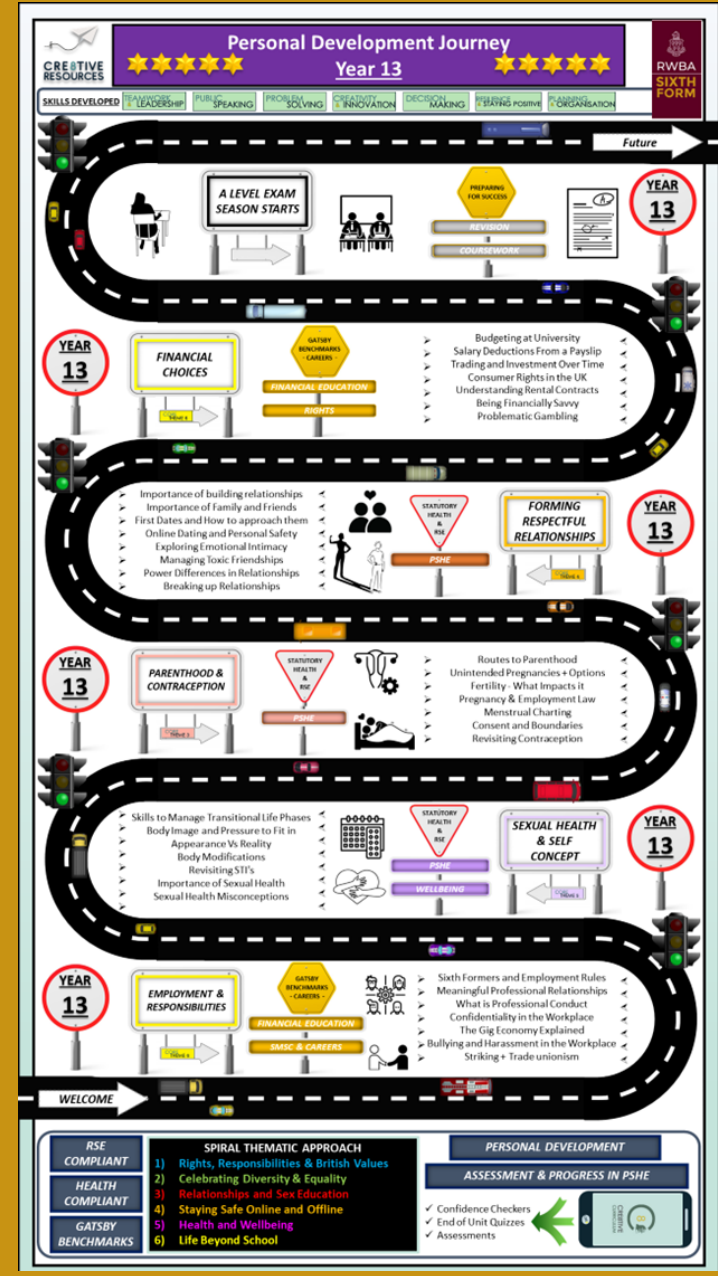
# Key Dates

- Practical Mock exams week beg 14th October
- Autumn mock exams and study leave **4th November – 12th November.**
- Progress reports published **Monday 2nd December**
- Parent evening Wednesday **4th December.**
- Year 13 resits from **13th January.**
- Practical mocks week beg **24th February**
- Final mock exams **3<sup>rd</sup> March – 12<sup>th</sup> March**
- Final progress report on **31st March**
- Summer exam series begins from **12<sup>th</sup> May – 27th June**



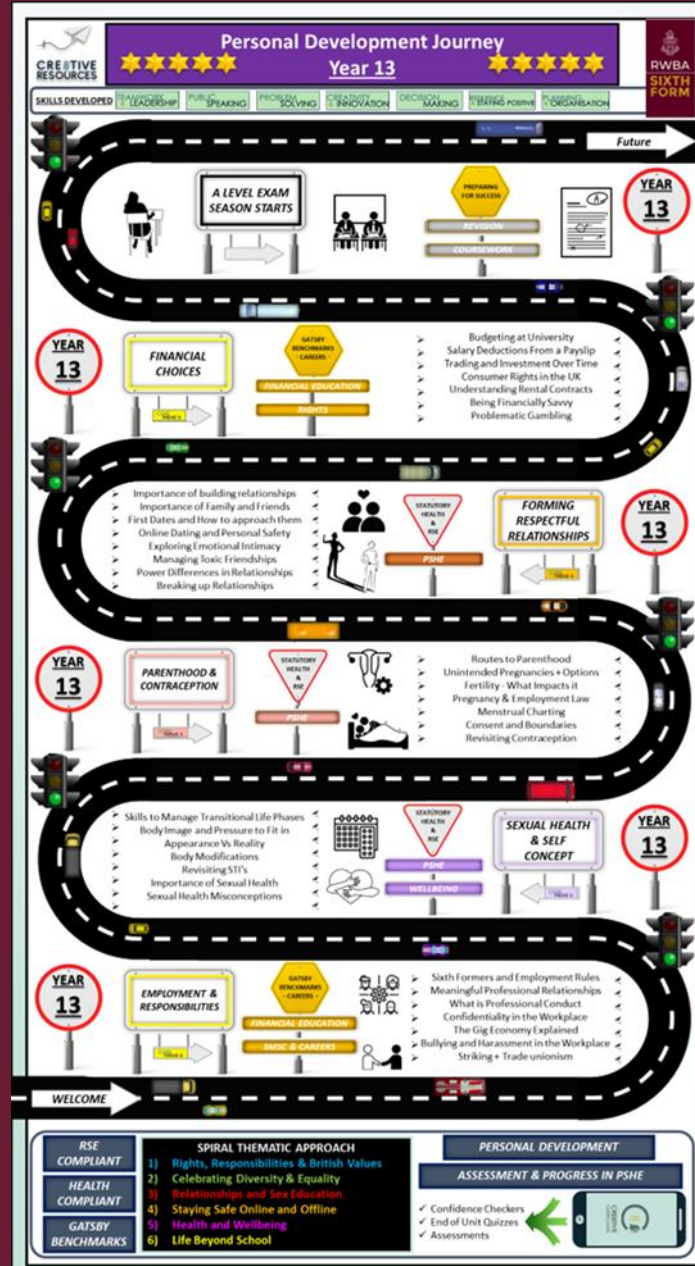


# Personal Development Time



# Skills developed:

- Teamwork
- Leadership
- Public speaking
- Problem solving
- Creativity & Innovation
- Decision Making
- Resilience
- Staying Positive
- Planning
- Organisation



# Themes:

- A level exam season
- Financial choices
- Forming respectful relationships
- Parenthood and contraception
- Sexual Health, consent and Self Concept
- Employment & responsibilities



RWBA  
SIXTH  
FORM

# Personal Statement evidence





RWBA  
SIXTH  
FORM

# Super Curricular



uptree



**SPEAKERS**  
for schools



# Extra Curricular

- Sports
- Clubs
- Activities
- Societies
- Talents
- Hobbies
- Volunteering
- Working in the local community.







RWBA  
SIXTH  
FORM

# Work experience



**SPEAKERS**  
for schools



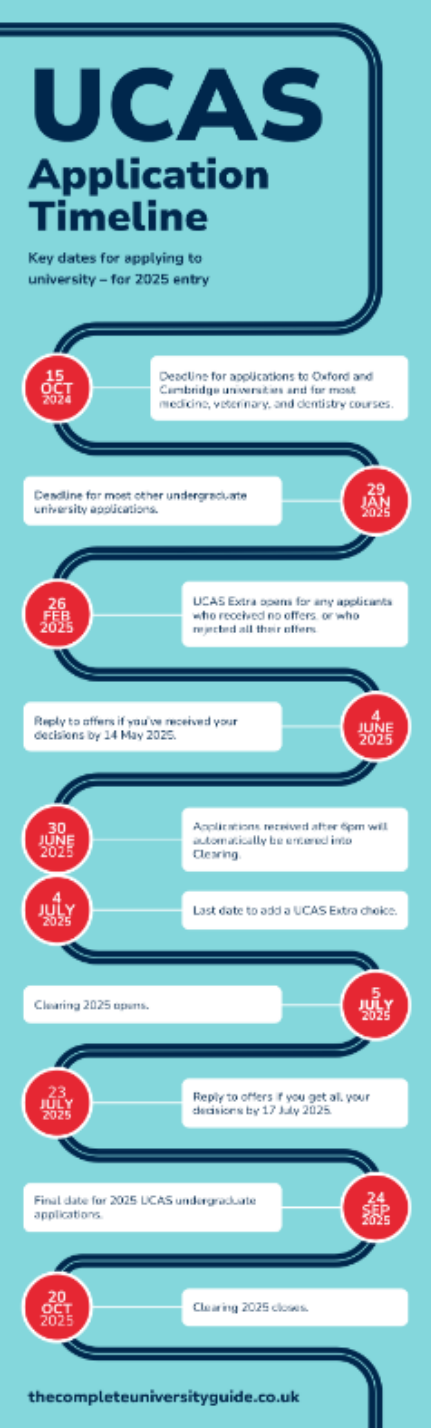
If you have worked in an industry before, this previous experience may signify to an employer that you can do the job required. Having relevant experience also helps individuals to develop new perspectives and learn vocational skills that are fully transferable within the workplace.

Work experience should give you: an understanding of the work environment and what employers expect of their workers. an opportunity to explore possible career options. increased self-understanding, maturity, independence and self-confidence.

**WATCH OUR FOUNDER ROBERT PESTON TAKE THE FLOOR AT THE EDUCATION SELECT COMMITTEE.**

Make high quality work experience accessible to all! At the end of last month, Robert Peston was a guest panellist at the sixth session into the inquiry of careers education at the Education Select Committee. Robert highlighted the benefits of virtual and hybrid work experience and made an impassioned case for access to high-quality work experience to be a universal right for all young [...]





- The value of Super Curricular.
- The experience of extra curricular

What opportunities and experience have you had that demonstrate your character and passions?

UCAS



- Changes to the UCAS references section.

# Key Dates



- **2025 entry deadlines**

- **15 October 2024:** Deadline for applications to Oxford and Cambridge universities, along with most medicine, dentistry, and veterinary courses.

- **29 January 2025:** Deadline for applications to the majority of undergraduate courses. After this date, universities will start allocating places on these courses – *but you can still apply after the 29 January deadline.*

- **30 June 2024:** Students who apply after this date will be entered into clearing.



We have built up a good relationship with large local and international companies and support students in applying for higher and degree apprenticeships.

In recent years students have been successful in firms such as Leonardo for Cyber security and BAE systems for submarines and maritime.

We have had visits from Atkins, St James place, BAE systems, Nationwide, Bevirs.



RWBA  
SIXTH  
FORM

# Leaver's arrangements

Valedictory Venue & date TBC (first week in July)

Leaver's day –TBC ( May)

Official leaving day – 30th June

**Results day**  
**Thursday**  
**14th August**  
**2025**



**Valedictory  
2024**





# What can you do to support?

- Contact the relevant member of staff if you have any concerns.
- Read the weekly newsletter and use the Sixth Form section of the website.
- Attend Parents evening.
- Support with students attendance to school.
- Monitor part time jobs, they should not exceed 10-15 hrs in a week.

**No student should ever say they have nothing to do!!!**

# Sixth Form Newsletter



# Any Questions?

